



*Pacific*  
Park Models

*All The Comforts  
Of Home...*



**Moduline**



# *Your Get-Away Cottage,*

# *Can Have All The Comforts Of Home...*

Getting away to your place at the lake or at the golf course should be as easy as getting in the car and just going. ***Pacific Park Model Homes*** from Moduline make it more than easy—they make it an absolute delight!

Relax in style with homes that *celebrate natural light and space* with cathedral ceilings, panoramic bay windows and a refreshing open design concept.

You don't have to abandon comfort to enjoy your get-away. With features like high quality cushioned vinyl floors, carpeted master bedroom, two-door refrigerator-freezer and 30" gas range, plus a wide range of available options and special features, you'll have *all the comforts of home*. Selected models even offer a loft or second bedroom.



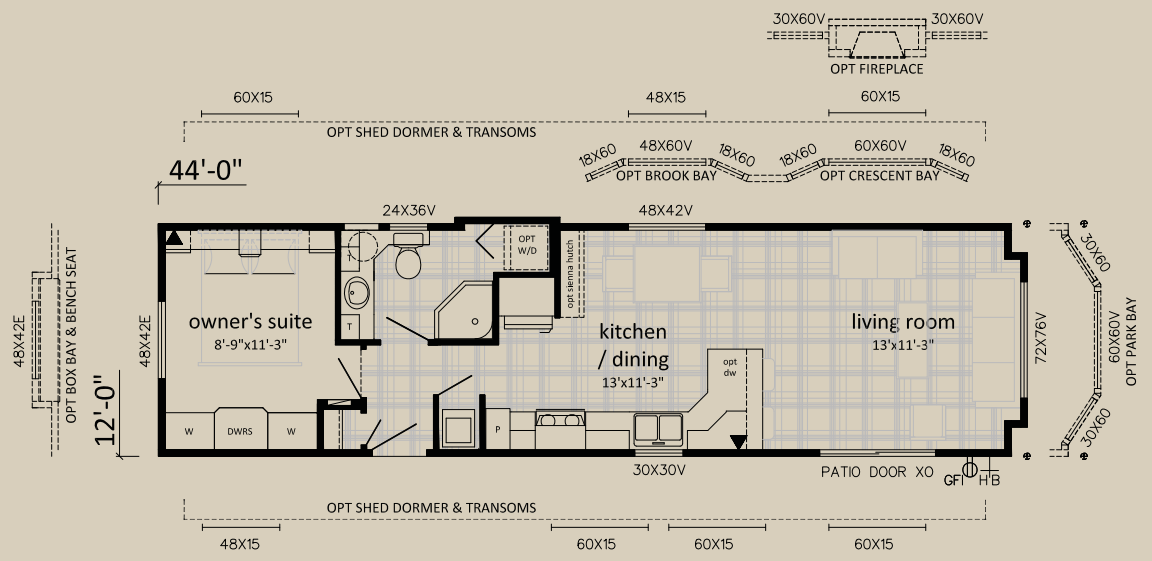
*“After buying our vacation home we have all the room we need to spoil our grandchildren...”*

Moduline Industries puts dedicated craftsmanship and care into everyone of its ***Pacific Park Model Homes***, craftsmanship acquired over 40 years of building quality manufactured homes, more than 30,000 of them! Now that's something you can rely on.



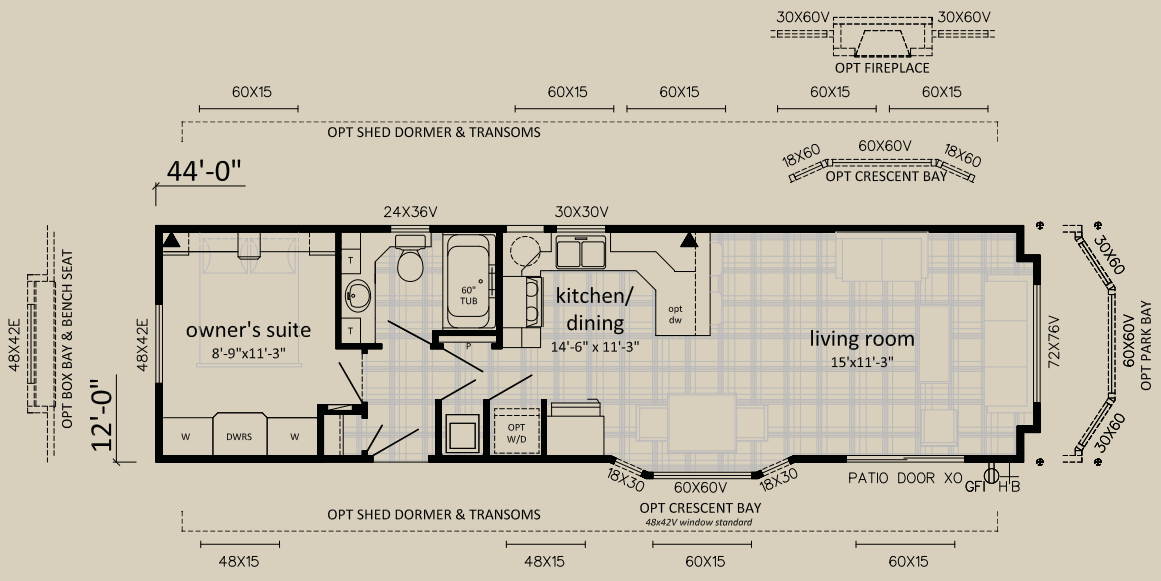
# Model #12943

- 12' x 44'
- 535 sq. ft.
- 1 Bedroom



# Model #12944

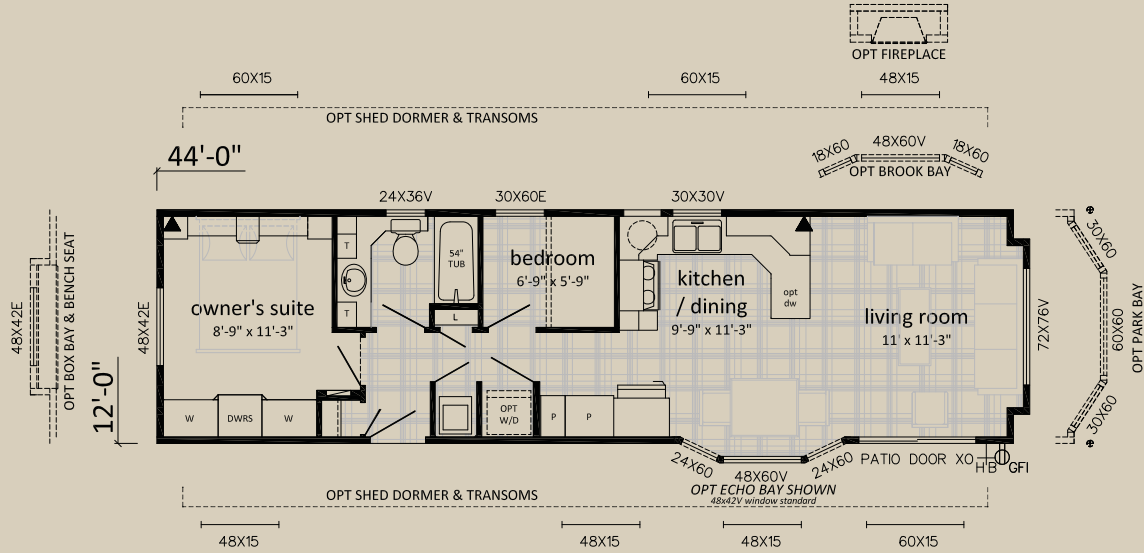
- 12' x 44'
- 535 sq. ft.
- 1 Bedroom





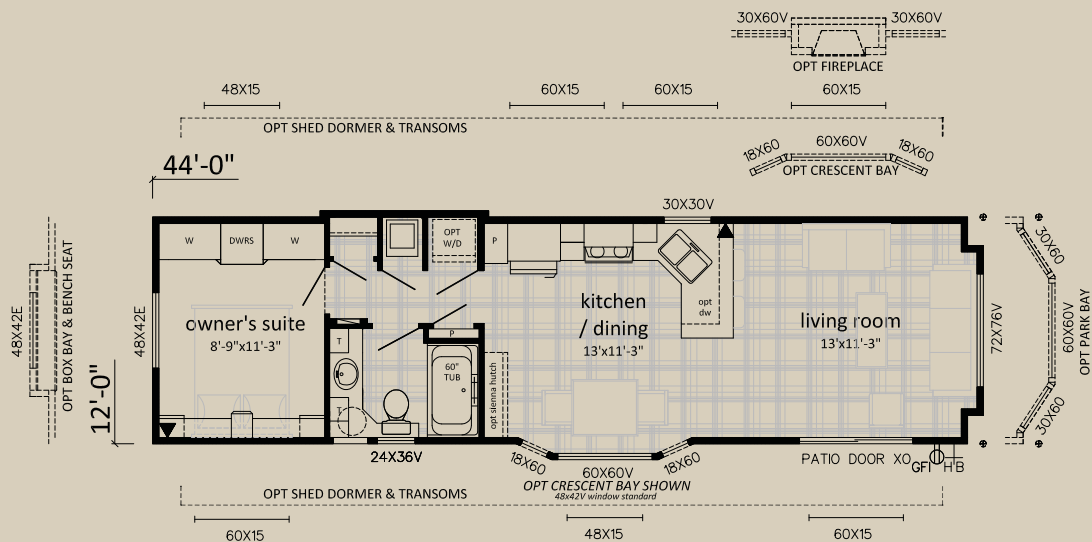
# Model #12945

- 12' x 44'
- 535 sq. ft.
- 2 Bedroom



# Model #12946

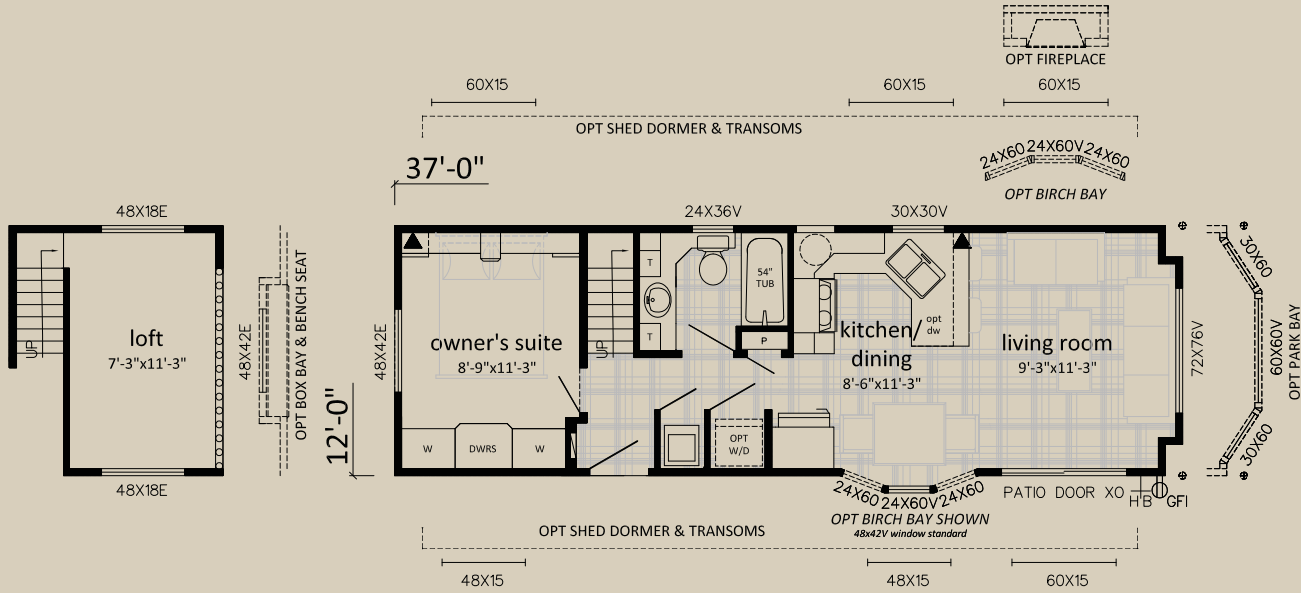
- 12' x 44'
- 535 sq. ft.
- 1 Bedroom





# Model #12936L

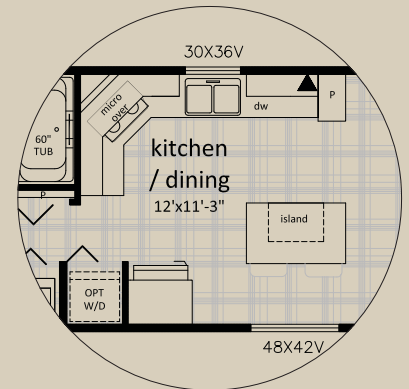
- 12' x 37'
- 538 sq. ft.
- 1 Bedroom plus Loft



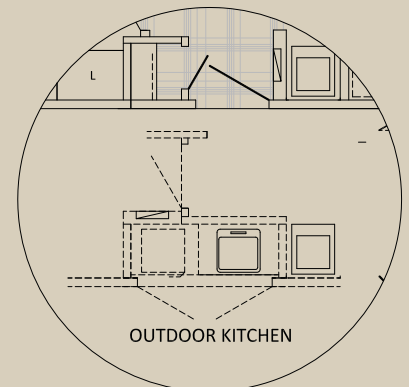
With stunning, bright interior spaces and smart floors plans to choose from, you can accessorize the Pacific Park Model to create a home that is uniquely yours, inside and out.

## Choose from some of these popular options:

- Queen-Size lift bed
- Reading Lights
- Headboard
- Bunk Beds
- Low E Windows w/Argon Gas
- White Grid Windows
- Trapezoid Windows
- Shed Dormer
- Transom Windows
- Fiber-Cement Siding
- Decorative Shake Trim
- Architectural Shingles
- 2' x 2' or 2' x 3' Skylight
- 30 Gallon Gas Water Heater
- Rough-in for Washer/Dryer
- A/C Ready Package
- Cedar Siding
- Exterior Country Villa Package
- Side and End Bay(s)
- Coach Lights
- T/V Package
- Fireplace w/Rock Front
- Ceiling Fans
- 2" Faux Wood Blinds
- Folding Door Room Divider
- Ribbed Glass Cabinet Doors
- Space-Saver Microwave Oven
- Dishwasher
- Additional Pantries
- Outdoor Kitchen



**Optional Kitchen Layout**



**Optional Outdoor Kitchen**

Not Available with all models.  
See your Dealer Representative.

# PACIFIC PARK MODEL HOMES

## Standard Features and Specifications

### **General Construction**

- 2 x 6 Floor Joist on 16" Center
- 5/8" T&G OSB Floor Decking
- 3/8" Exterior OSB Sheathing
- 7/16" Roof Decking
- Fiberglass Shingle Roof (30yr. Warranty)
- Painted Wooden Fascia
- 7/12 Roof Pitch
- 5/12 Ceiling Pitch
- Maintenance-Free Vinyl Lap Siding
- 12" Fixed Perimeter Vented Eaves
- Residential Double-Glazed Vinyl Windows
- Coach Light at Exterior Entrances
- Exterior GFI Electrical Outlet
- Exterior Frost-Free Tap
- Front Box Bay Window
- Insulation: Roof R24, Floor R20, Wall R12

### **Tasteful Interiors**

- Carpet in Owner's Suite
- Quality Cushioned Linoleum Flooring in all Other Areas
- 1" Horizontal Blinds/Valances on All Windows (Except Baths)
- Vaulted Ceilings Throughout
- Décora Receptacles and Switches
- Santa Fe' Interior Doors
- Deluxe Nightstands with Overhead Cabinets
- Owner's Suite Cabinetry Wardrobes and Built-In Drawers
- Upgraded Medium Birch Trim Throughout

### **Bright, Beautiful Kitchens**

- Ceramic Tile Backsplash
- Pantry (Most Models)
- 30" Propane Range (Most Models)
- Exterior Vented Range Hood w/Light
- 18 cu. ft. 2-Door, Frost Free Refrigerator
- Double Stainless-Steel Kitchen Sink
- Doweled, Full Modular Cabinetry w/Crown Moulding
- Water Shut-Off Valve
- Raised Range and Fridge Cabinets

### **Spacious Baths**

- Ceramic Tile Backsplash
- Obscure Bath Window
- Combination Tub/Shower w/Single Level Faucet (Most Models)
- GFI Receptacle
- Power Bath Fan on Separate Switch
- Tower Linens and Shelving
- Framed Vanity Mirror
- Valance with Puck Lights above Sink

### **Utility Services**

- Dehumidistat Control
- Electronic Ignition Gas Furnace
- 30 Gallon Electric Hot Water Tank
- 50 Amp Electrical Service with 25' Cord
- Front and Rear Propane Line
- Smoke/Carbon Monoxide Detector
- Heat Tape Plug
- (2) Two Communication Outlets (LR and BR)

### **10 Year Warranty**

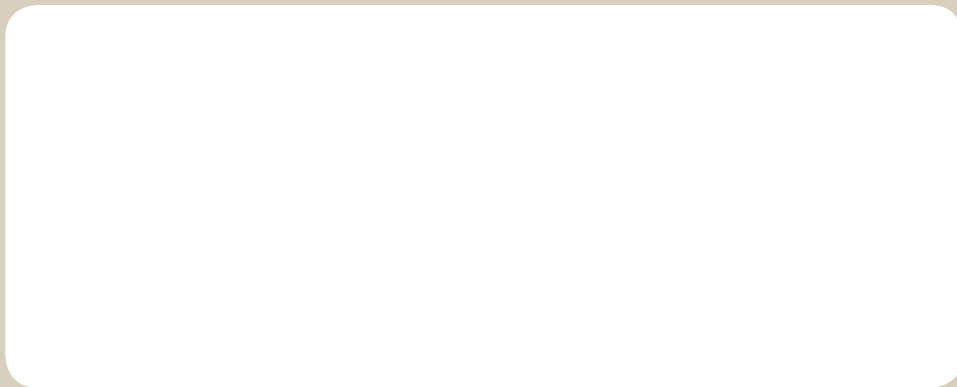
*Square footages and room sizes shown are approximate.  
Due to our policy of progressive product improvements,  
all prices and specifications are subject to change without notice.*

# 10 Year Warranty

Visit our website at  
[www.pacificparkhomes.com](http://www.pacificparkhomes.com)



SOLD EXCLUSIVELY BY YOUR DEALER



**Moduline**

**MHI Canada**

Trade Association to the  
Manufactured Housing Industry



Canadian  
Home Builder's  
Association



MODULINE INDUSTRIES

P.O. BOX 190-1175 RAILWAY STREET, PENTICTON, B.C. V2A 6K3

PHONE: (250) 493-0122 FAX: (250) 493-0133

5M/06/11